

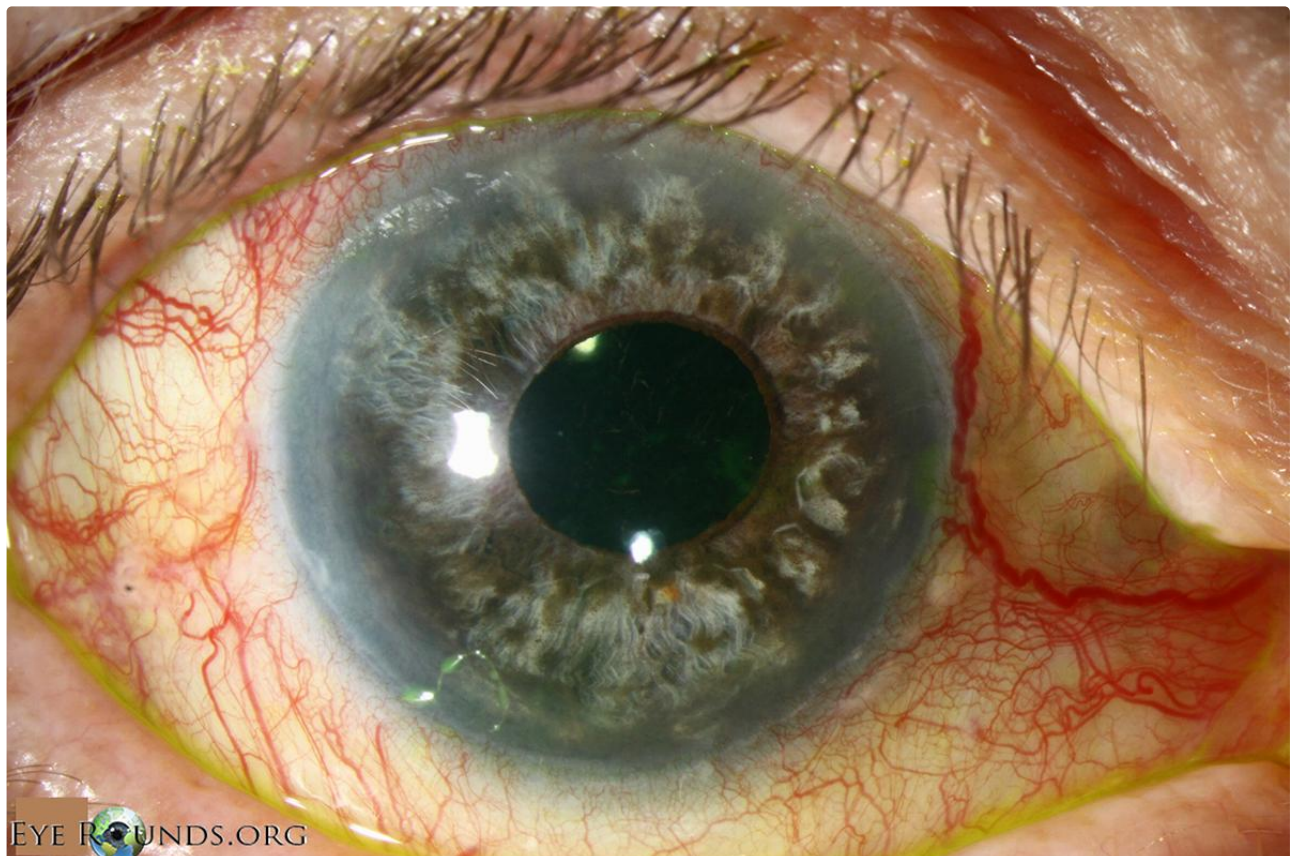
Ring Melanoma

Category(ies): Glaucoma, Iris

Contributor: [Johanna Beebe, MD](#)



This is an 81-year-old gentleman who was referred to the University of Iowa glaucoma service for a history of acquired heterochromia, in addition to progressively elevated intraocular pressures. Upon presentation his anterior slit lamp exam showed a deep anterior chamber with 2+ pigmented cell. There was diffuse, velvet-like pigment on the iris in a circumferential fashion and also neovascularization. He had a posterior chamber intraocular lens. Gonioscopy revealed thick pigment overlying the entire iridocorneal angle for 360 degrees, causing his elevated IOP due to obstruction of the trabecular meshwork. Ocular echography revealed a ciliochoroidal lesion measuring 17mm at its base and 6mm in height. He was diagnosed with a ciliochoroidal melanoma leading to ring melanoma which prompted an immediate metastatic work up and subsequent enucleation.



EYE ROUNDS.ORG

Enlarge

Download

Image Permissions:



Ophthalmic Atlas Images by [EyeRounds.org](#), [The University of Iowa](#) are licensed under a [Creative Commons Attribution-NonCommercial-](#)

Address

University of Iowa
Roy J. and Lucille A. Carver College
of Medicine
Department of Ophthalmology and
Visual Sciences
200 Hawkins Drive
Iowa City, IA 52242

[Support Us](#)

Legal

Copyright © 2019 The University of
Iowa. All Rights Reserved
[Report an issue with this page](#)
[Web Privacy Policy](#) |
[Nondiscrimination Statement](#)

Related Links

[Cataract Surgery for Greenhorns](#)
[EyeTransillumination](#)
[Gonioscopy.org](#)
[Iowa Glaucoma Curriculum](#)
[Iowa Wet Lab](#)
[Patient Information](#)
[Stone Rounds](#)
[The Best Hits Bookshelf](#)

EyeRounds Social Media

Follow



Receive notification of new cases,
[sign up here](#)
[Contact Us](#)
[Submit a Suggestion](#)